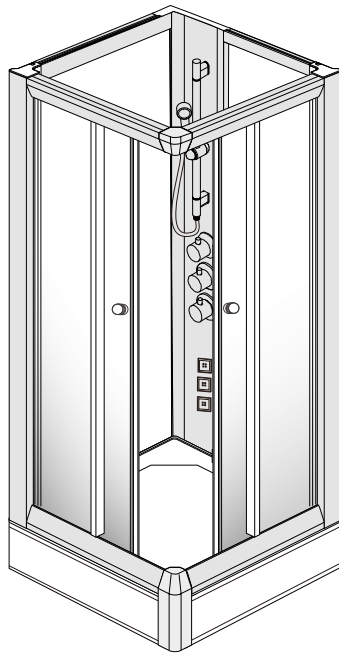


Installationsanvisning
STOCKHOLM 70x90x210



Vigtig information, før du starter.











1) Generel information.

Sørg for at kontrollere produktet grundigt ved modtagelsen. Skulle der forekomme mangler eller skader skal disse meldes til forhandler/producent. Vær forsigtig ved håndtering af glasdelene, og undgå at sætte glasset direkte på hårde overflader. Eventuelle skader på glasset efter produktet er pakket ud, vil ikke blive betragtet som et gyldigt grundlag for reklamation.

Vær opmærksom på aluminiumsprofilerne godt kan have mærker fra produktion, da materialet er blødt under fremstillingen og er blevet poleret, ekstruderet og anodiseret. Profilerne er i kvalitetskontrollen blevet testet og godkendt til anvendelse af kabinen.

2) Ekstra information.

Sørg for at gennemgå manualerne grundigt før samlingen påbegyndes. Vær opmærksom på den ønskede placering af kabinen giver mulighed for vandtilførsel samt gulvafløb. Da flere af delene kan være tunge, og/eller svære at håndtere anbefales det man er to til, at foretage samlingen af kabinen.

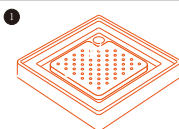
Nødvendigt værktøj			
Målebånd		Boremaskine	
Vaterpas		Skruetrækker	
Blyant		Stjerneskruetrækker	
Ø6 mm bor		Hammer	
Ø3 mm bor		Silikonfugemasse	

OBS, det er et tungt produkt og kan være svært at håndtere, så det anbefales at man er to til at samle kabinen.

INDHOLD

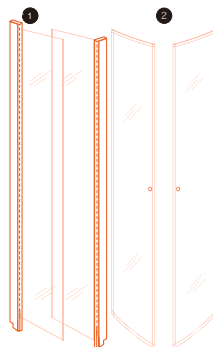
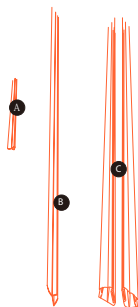
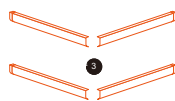
DEL 1/4

- ① 1 x komplet bundkar med afløb



DEL 2/4

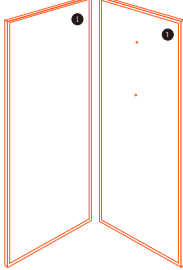
- ① 2x Sideglas med monterede aluminiumsprofiler
- ② 2x Glasdøre
- ③ 4x horisontale aluminiumsprofiler
- ④ Gummiliste sæt:
 - A 4x korte gummilister til sideglas
 - B 4x lange gummilister til montering på sideglas og døre
 - (2stk er for monteret)
 - C 2x magnetlister til dørene



INDHOLD

DEL 3/4

① 2x Glas bagvægge



OBS ! OBS ! OBS !

Glas:
I det omfang det er muligt, bør man altid være 2 personer, så at lette og håndtere glasset.

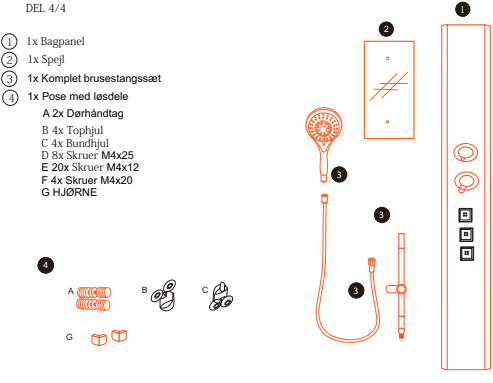
Er man alene, bør man altid lette på midten af glasset, og ikke lige over midten.

Glasset er tungt, og har fympåle i begge ender, og kan derfor gå i stykker, hvis man behandler det forkert.

DEL 4/4

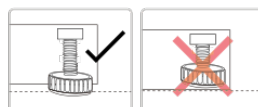
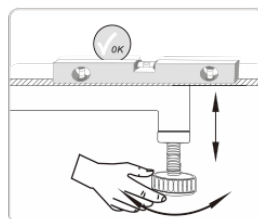
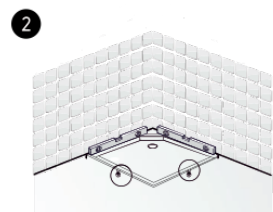
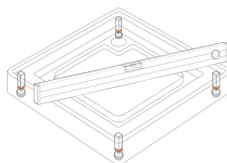
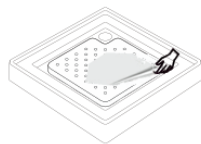
① 1x Bagpanel
② 1x Spejl
③ 1x Komplet brusestangssæt
④ 1x Pose med løsdele

A 2x Dørhåndtag
B 4x Tophjul
C 4x Bundhjul
D 8x Skrue M4x25
E 20x Skrue M4x12
F 4x Skrue M4x20
G HJØRNE



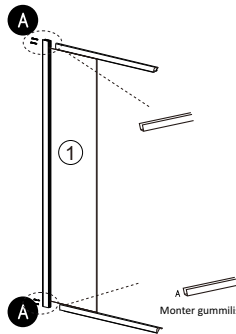
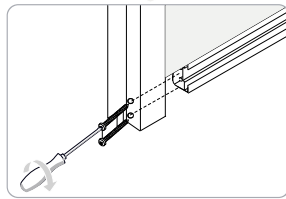
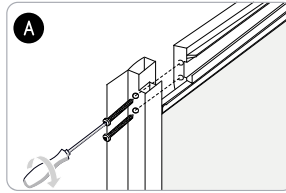
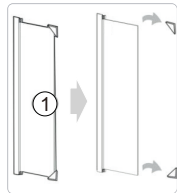
SAMLEVEJLEDNING

1 Fronten på bundkarret er for monteret



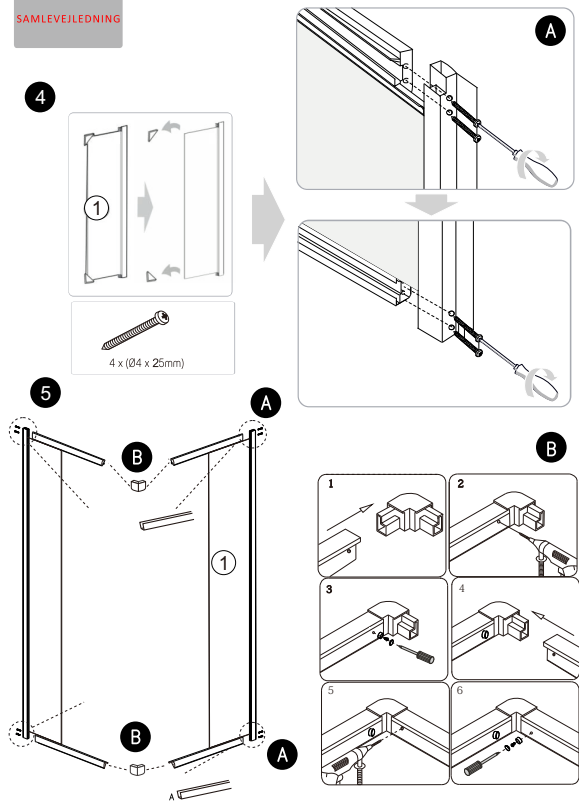
SAMLEVEJLEDNING

3



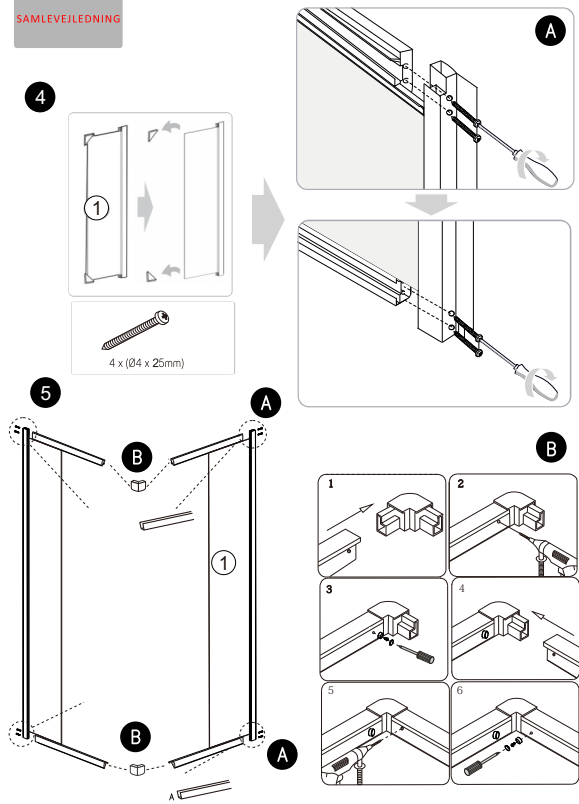
Monter gummliste på sideglasset før det monteres i profilerne.

SAMLEVEJLEDNING



Monter gummiliste på sideglasset før det monteres i profilerne.

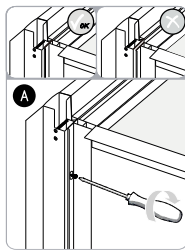
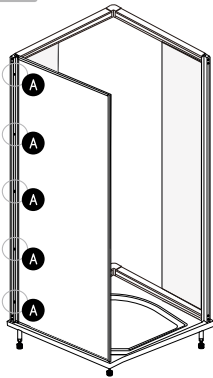
SAMLEVEJLEDNING



Monter gummiliste på sideglasset før det monteres i profilerne.

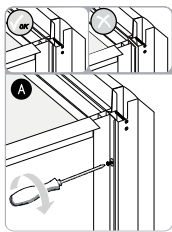
SAMLEVEJLEDNING

7

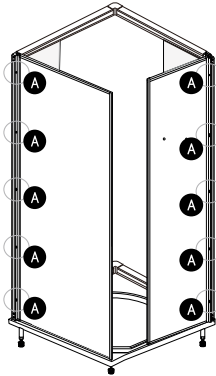


5 x (24 x 12mm)

8

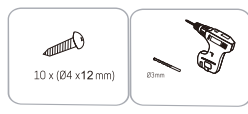
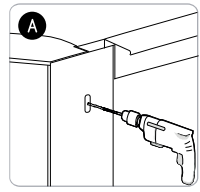
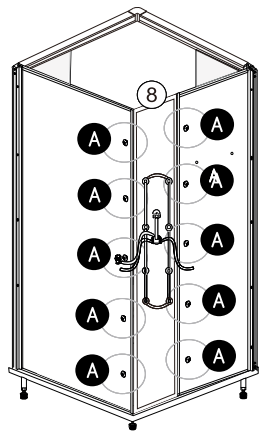
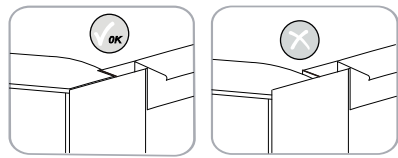


5 x (24 x 12mm)



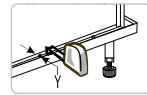
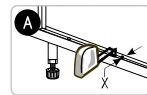
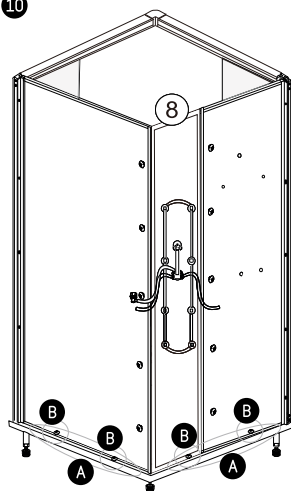
SAMLEVEJLEDNING

9

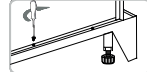
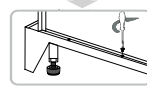
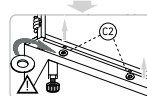
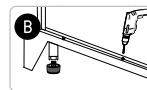


SAMLEVEJLEDNING

10



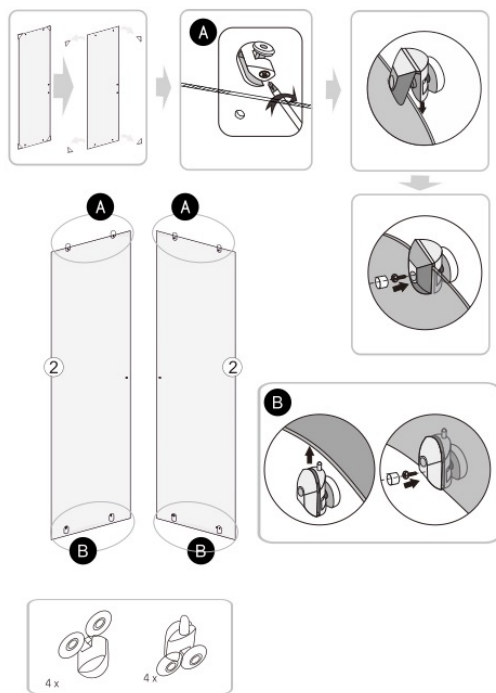
$\triangle X = Y \triangle$



Fastgør kabinen på bundkaret. Placer en kant af vædrumssilikonene inden kabinen løftes på.

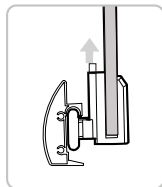
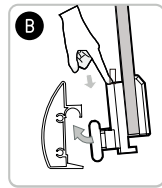
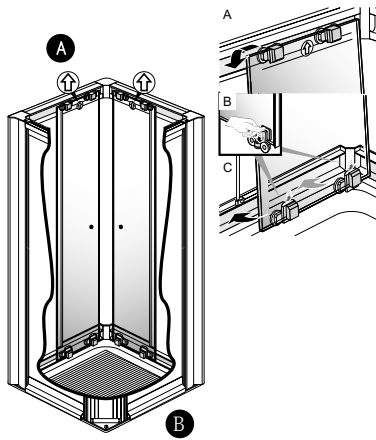
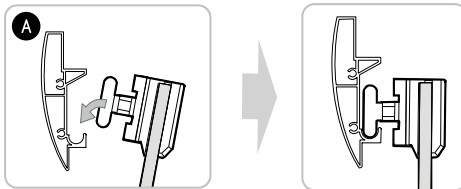
SAMLEVEJLEDNING

11



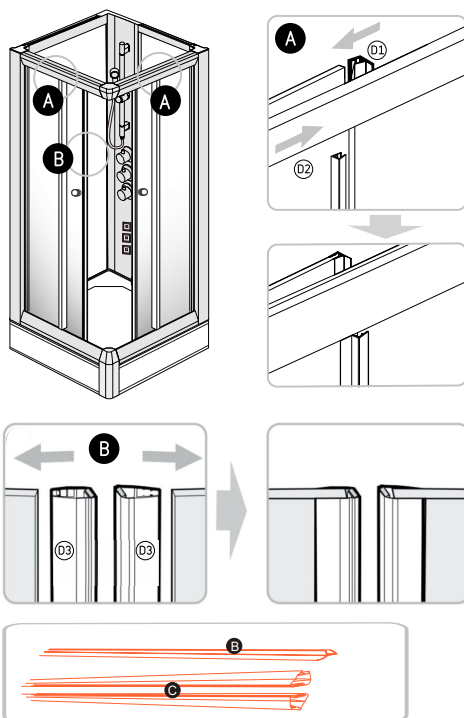
SAMLEVEJLEDNING

12



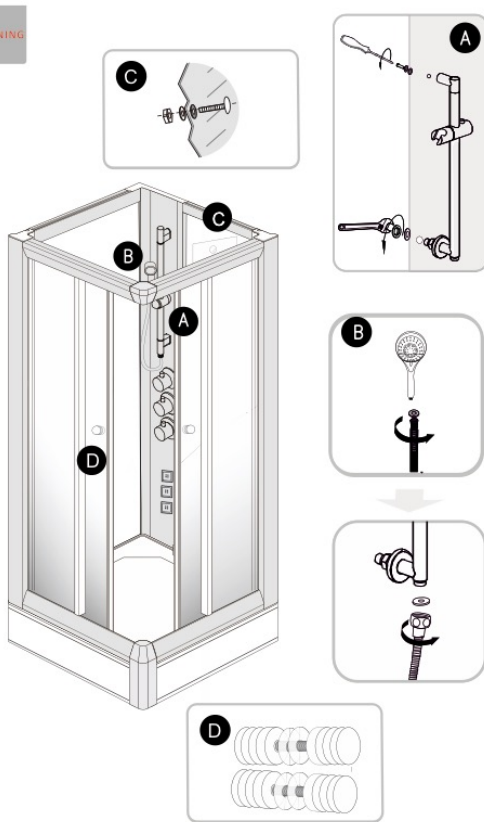
SAMLEVEJLEDNING

13



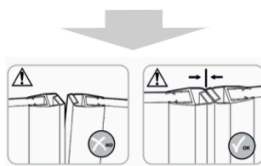
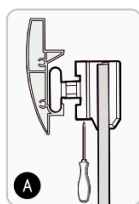
SAMLEVEJLEDNING

14



SAMLEVEJLEDNING

16



Brug silikone mellem bundprofil og bundkar.